

PENTNEY ABBEY

Pentney Abbey



UNIQUE NORFOLK VENUES





A romantic scene of a bride and groom walking hand-in-hand on a gravel path. The groom is wearing a light-colored suit and vest, and the bride is in a white lace wedding dress. They are both smiling. In the background, a large, historic stone castle with multiple towers and arched windows stands under a warm, golden sunset sky. The sun is low on the horizon, creating a soft glow and long shadows.

Key Information

Ceremony Capacity: Up to 80 guests

Wedding Breakfast Capacity: Up to 100 guests

Evening Reception Capacity: Up to 170 guests

Licensed for Marriage: Yes indoor & outdoor

Bar: In-house

Catering: In-house chefs (UNV Kitchen)

All-Weather Venue: Yes

Accommodation: Sleeps 18 + 11 Bells Tents

Honeymoon Suite: Included

Preparation Room: Included

Pet-Friendly Ceremonies: Yes

Event Managers: Yes

Exclusive Use: Yes

Parking: Yes

Stay the Night Before: Subject to availability



Welcome

Pentney Abbey is a breathtaking estate in the heart of Norfolk, where ancient history meets contemporary elegance. From the moment you arrive through the 14th-century Gatehouse, the atmosphere is unforgettable.

Begin your day in the peaceful Preparation Room, marry beneath stone arches or outside with the Gatehouse as your backdrop. Then, celebrate with drinks and canapés either outside or inside the Gatehouse, with flexible options to suit you, with drinks, dinner and dancing in the elegant Barn.

With accommodation for up to 18 guests, including a Honeymoon Suite and seasonal bell tents, the estate is yours to enjoy - from first look to final dance.





Our History

The Gatehouse at Pentney Abbey dates back to 1380 and originally served as the grand entrance to the Benedictine priory that once stood on the site. Its upper chamber was thought to be used as a private chapel or a meeting space for the prior, offering views over the surrounding estate. For centuries, it stood as a symbol of status, spirituality and strength.

Pentney Abbey's fate was sealed under King Henry VIII's rule. When the Dissolution of the Monasteries occurred in the 16th century, much of the abbey was dismantled, but the Gatehouse remained - an enduring piece of medieval architecture and a link to Norfolk's religious and social history.

In more recent times, the Gatehouse underwent significant restoration thanks to a major grant from English Heritage, which included structural repairs and a new oak roof to safeguard its future. This vital work helped preserve the site's historic features and opened the door for a new chapter as a wedding venue. In 2016, Pentney Abbey was purchased by the Campbell family to sit proudly within the Unique Norfolk Venues collection.

Today, it provides one of the most atmospheric and memorable ceremony settings in the county. Around it, the estate continues to be lovingly restored by Unique Norfolk Venues into an exquisitely elegant venue.



8

5

4

2

3

15

1

14

16

6

13

7

9

10

15

14

12



1 GATEHOUSE

2 COURTYARD

3 HONEYMOON
SUITE

4 FARMHOUSE

5 PREPARATION
ROOM

6 WALNUT COTTAGE

7 FIG TREE COTTAGE

8 BELL TENTS

9 BARN

10 PATIO

11 GUEST/SUPPLIER
CAR PARK

12 SUPPLIER
DROP OFF

13 UNV OFFICE

14 TOILETS

15 BAR

16 GATEHOUSE
GARDEN

11

Envisage Your Wedding Day

Your wedding day at Pentney Abbey flows effortlessly — relaxed, joyful, and entirely your own.

Begin in the private Preparation Room, a cosy space just a short walk from the Gatehouse, perfect for getting ready with your closest people.

When it's time, gather with your wedding party at the Gatehouse. Whether you head up the spiral staircase to exchange vows under the ancient arches, or walk the garden aisle with the

Gatehouse behind you, it's a moment to remember.

After the ceremony, enjoy fizz and canapés in the Gatehouse garden or beneath the arches. With music playing and drinks from the East Chamber bar, the atmosphere is full of celebration. Confetti at the Gatehouse gates is a picture perfect moment.

Then it's over to the Barn for dining and speeches, before the evening unfolds with food, drinks and dancing — the perfect end to your day.



Timeline

2 PM

It's time for your ceremony in your choice of location.



3 PM

Any guests staying in the accommodation can now check in.



6:30 PM

Time for the all-important speeches.



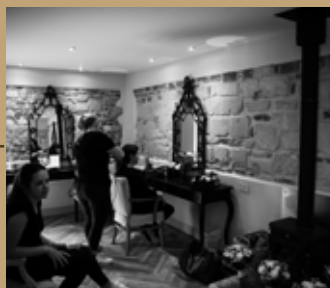
9 PM

Party the night away with your guests and enjoy a choice of evening food.



10 AM

You and your wedding party begin getting ready in the Preparation Room.



2:30 PM

Now married, your reception begins with drinks and canapés in the gardens or under the Gatehouse.



4:30 PM

Your wedding breakfast is served – we recommend allowing two hours for this part of the day.



7:30 PM

Your moment as a newlywed couple to cut the cake and have your first dance.



Midnight

Your music comes to an end – time to retreat to your Honeymoon Suite.

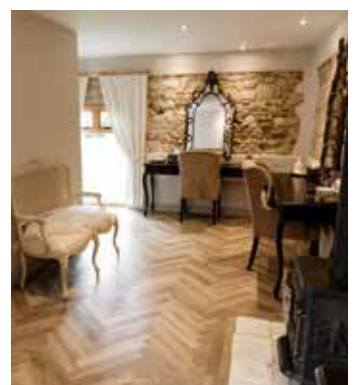


The Preparation Room

Start your day in comfort and style. Located just a short walk from the Gatehouse, the Preparation Room is a private and peaceful space designed for getting ready with your wedding party.

With plenty of mirrors, natural light and space to relax, it's a calm place to enjoy the excitement of the morning. Whether you're sipping fizz, sharing a moment with loved ones or putting the finishing touches to your outfit, it's all just steps away from the ceremony.

The room is yours from 10am, giving you the time and space to ease into your day before it all begins.



Your Ceremony

Pentney Abbey offers two unforgettable ceremony spaces, each full of character and charm.



THE GATEHOUSE

Steeped in history, the 14th-century Gatehouse provides a breathtaking indoor ceremony setting. Walk up the stone staircase and exchange vows beneath vaulted arches surrounded by centuries of stories. With soft lighting and atmospheric stonework, it's an incredible place to begin your next chapter.



THE GATEHOUSE GARDEN

For outdoor ceremonies, the Garden offers a peaceful space with the Gatehouse standing proudly behind. Framed by flowers and Norfolk countryside, it's a natural and romantic setting for a summer wedding.

Your First Celebration

You've just tied the knot - now it's time to celebrate!

After your ceremony, guests are invited to gather in the Gatehouse garden or beneath the historic arches to enjoy drinks and canapés. The East Chamber bar is nearby, keeping drinks flowing while everyone soaks in the moment.

It's a relaxed time to enjoy a drink, greet your guests, and

take in the setting, perhaps with some live music in the background. It's also the perfect opportunity for a few photos together, with the grand Gatehouse gates providing a striking backdrop for your all important confetti moment.

This is your chance to pause, take it all in, and enjoy the atmosphere before you head over to the Barn for your wedding breakfast.





Your Wedding Breakfast

As guests make their way to the Barn, the celebrations continue in style! The space is welcoming and full of charm, and can be tailored to your style. Whether you're planning something relaxed and rustic or more elegant and refined.

There's room for up to 100 guests, with the flexibility to choose between round tables, long banqueting layouts or a mix of both. From fine linens to statement charger plates, drapes and bespoke florals, the Barn is a blank canvas that can be styled just how you imagine it, with support from our recommended suppliers.

Before you arrive, our team ensures every last detail is set, from place settings and centrepieces to personalised table plans. Then it's time to take your seats and enjoy your first meal as a married couple. Throughout the meal, our wedding and service team oversee every detail, ensuring each guest receives their chosen dishes and that you're attentively looked after throughout.

As the meal ends and glasses are raised for speeches and toasts, the Barn is transformed. Tables are cleared and space is made for music and dancing. With room for up to 170 evening guests, it becomes the setting for an unforgettable evening!

Dining with UNV Kitchen

At Pentney Abbey, we believe food deserves to be at the heart of your celebration. Our in-house team is passionate about creating elegant, seasonal dishes, using the best local ingredients wherever possible.

Whether you prefer a classic three-course wedding breakfast, relaxed sharing platters or a bespoke menu designed just for you, our chefs will work with you to shape a dining experience that reflects your style and tastes.

Optional enhancements, including additional courses and bespoke drinks selections, are also available for couples wishing to personalise their menu even further.






Your Tasting Experience

As part of your planning journey, you are exclusively invited to our tasting evenings — a relaxed and fun experience designed just for you. Enjoy drinks and canapés on arrival, live music, and the chance to sample a curated selection of seasonal dishes chosen by our chefs.

You'll be joined by other couples also preparing for their big day, creating a warm, welcoming atmosphere that offers a genuine taste of what's to come.



The Bar

Pentney Abbey has two bar spaces to keep guests refreshed from start to finish.

The East Chamber bar sits beside the Gatehouse and is perfect for pre-ceremony drinks and your drinks reception after the 'I dos'. Later on, the Barn bar opens as you head into your wedding breakfast and stays open into the evening celebrations.

Both bars are fully stocked with wines, beers, spirits and

soft drinks, and our friendly team keeps service flowing all day long. Want to pre-order cocktails, set up a bar tab or plan a welcome drink? Just chat to our Wedding Planning Team and we'll help bring it to life.

Card-only payments make things easy for guests, and bar tabs or custom drinks packages can be arranged in advance to suit your plans.



Cheers!





Your Evening Celebration

As the Barn is transformed after your wedding breakfast, it becomes the centre of the evening's celebrations - ready for dancing, music and evening food.

The layout can be tailored to suit your plans, from a buzzing dancefloor to relaxed lounge-style seating, or a mix of the two. Guests can enjoy a drink on the

patio, enjoy evening food served by our roaming team, offering everything from wood-fired pizza to loaded fries, or head straight to the dancefloor.

Whether you're planning a DJ or live band, adding a photobooth or even a casino table, our team will help you shape your evening reception.

Accommodation



Your wedding doesn't have to end with the final dance.

At Pentney Abbey, you and your guests will stay the night on-site in charming accommodation - letting you extend the celebration and make the most of a relaxed morning together before heading off.

Why not add the night before and enjoy a relaxed meal with your nearest and dearest in the Farmhouse?

The Farmhouse, Sleeps 10

5 doubles, 2 en suites, 2 family bathrooms (includes Honeymoon Suite)

Walnut Cottage, Sleeps 4

1 double, 1 twin room, 1 family bathroom

Fig Tree Cottage, Sleeps 4

1 double, 1 twin room, both en suite

Luxury Bell Tents

11 Luxury tents available May to September. A fun and relaxed overnight option just steps from the main venue.

The Wedding Experience

OUR IN-HOUSE TEAM

Venue Experts
Sales & Planning Service
Wedding Coordinators
In-house Chefs

Unique Norfolk Venues is here to support you at every stage. From your first enquiry through to the final moments of your wedding day.

Our experienced Sales Team will guide you through your initial venue visit, answer your questions, and help shape your vision from the very beginning.

As your planning progresses, you'll be supported by our Wedding Coordinator team - working with you on everything from choosing your menu with

UNV Kitchen to finalising the flow of your day.

On the day itself, your UNV wedding team will be there to oversee the celebration - from arranging your dress or buttonholes to making sure the room is set and everything is exactly as it should be before you make your entrance.

Our role is simple: to take care of the details, so you can focus on what matters - enjoying the people and the day around you.







FAQ

THE PACKAGE

What is included in the package?

Please see the package price list for details.

Do I have exclusive use of the venue?

Yes, you have exclusive use of the venue and grounds from 2pm until 12 midnight on the day of your wedding.

How many guests can this venue accommodate?

The Ceremony room has a maximum capacity of 80 persons (including guests, UNV staff and wedding suppliers). For a sit-down meal we can seat up to 100 guests and accommodate up to 170 guests for an evening reception. The Gatehouse can hold up to 40 guests for a drinks reception.

Is the venue licensed to hold Civil Ceremonies?

Yes, our venue is fully licensed to hold civil ceremonies both inside and outside. We charge £120 for a civil ceremony and £180 for an outdoor ceremony. This fee is on top of the package.

What time can I get married at this venue?

We recommend that your wedding ceremony takes place at 2pm if opting for a one-night package. A 1pm ceremony is available for couples staying the night before and carries a £250 additional

charge. Please check what ceremony times are available with the registrar. Our wedding planning team can advise you on your timeline and ceremony options.

Are chairs provided for the ceremony?

Yes, chairs are provided as part of the package, but cannot be moved outside due to the requirement of a suitable backup in adverse weather. If you are having an outdoor ceremony, you will need to hire additional outdoor chairs separately which can be done through our wedding planning team.

What about music during the ceremony?

Many couples book musicians to provide music during their ceremony, however you are more than welcome to use the sound system already in the ceremony room. For outdoor ceremonies, please check with our wedding planning team if you are required to provide your own speaker. Any external speaker must be PAT tested.

Is there a local church?

Yes, there is a local church within the village which is a 5 minute drive from Pentney Abbey. To find out more contact St Mary Magdalene Narborough Road, Pentney, Norfolk, PE32 1JT
Rev. Canon Stuart
01760 338552

Will I have the same dedicated Wedding Coordinator throughout the planning process?

Every couple will have access to our wedding planning team from the very beginning, so there will always be someone to help guide you with questions or ideas anytime you reach out. Closer to your wedding date, you will then be assigned your designated wedding coordinator to ensure every last detail is managed on your big day!

Can we use any supplier?

Yes. We have available a recommended supplier list. Should you wish to work with suppliers not on our pre-approved list we require all suppliers' phone numbers, email addresses, and a copy of their public liability insurance before they can operate at our venue. If any supplier is using electrical equipment, PAT certificates must be provided in advance. By making a booking at our venue, we assume that you agree to these conditions.

Can we decorate the barn beams?

Yes, we have a list of recommended suppliers. For insurance reasons, only our authorised suppliers can hang decorations at height.

What time can we access the venue for setting up?

If you have booked the accommodation for the night

before your wedding, you may access the venue for setup between 12pm and 4pm. If you have not booked the night before, setup access is from 10am on the day of the wedding. However, if there is no event scheduled the day before, we may be able to offer access for setup between 12pm and 4pm — please email our wedding planning team. If early access is not possible, your wedding coordinator will set out your decorations for you at no extra charge.

Is confetti allowed?

Yes, only natural or organic confetti is permitted. Unfortunately, biodegradable paper confetti is unsuitable for use at the venue.

Are dogs allowed at the venue?

Yes, your dog can be on site for up to 1.5 hours. Your dog can join you in the ceremony areas and in the grounds during your reception. Your dog must always be kept on a lead. Under no circumstances can your dog be permitted in the accommodation or any unauthorised buildings. The wedding party is responsible for clearing up after your dog. Once your dog's visit concludes, provisions must be in place for timely collection of your dog. We have a list of recommended suppliers for drop off, pick up and overnight stay.

What time will the wedding end?

Last orders are at 11:45pm and the bar closes at midnight. Music should also finish at

midnight. Please advise your guests to arrange their taxis or transportation in advance. We can extend our music and bar licence until 1am at an extra cost of £400.

What about clearing up the next day?

There is no need to worry about this; our event team will clear everything and pack away your decorations for you, ready for collection the following day. A member of our team will also be there to greet you upon checkout at 10am to return your belongings.

Can we hire a projector and screen?

Yes, the projector screen is £20 to hire and the projector is £30. You can add these to your booking after speaking with our wedding planning team.

Can we hire Z-beds and Cots?

Yes! Z-beds: £20 per stay (four available) and Cots: £10 per stay (two available).

OUTSIDE AREA

Is there seating outside?

Yes, there are chairs and tables in the outside area for your guests. If you require more seating options, you will need to hire this through an external supplier.

Can we have any outdoor games or bouncy castles?

Yes, you are welcome to have lawn games outside in permitted areas. Bouncy castles are not allowed at the venue. Please note

our staff are unable to supervise any lawn games.

Is outdoor lighting allowed to be put up around the venue?

Yes, only if agreed before and provided by our recommended suppliers.

Can we put signs on the ground?

Yes, A-frame boards or easels can be used for signage. We cannot allow signs to be inserted into the ground due to preserving the gardens and entrances. All your signage must be removed when leaving Pentney Abbey.

Do you allow coaches?

Yes, mini-buses can be used, but must drop guests off at the top of the guest car park. Larger coaches can not be accommodated due to the lack of turning space available.

Can we park?

There is parking at the venue providing ample spaces for guests. Cars may be left overnight, at the owner's risk, for collection the next morning by 10am latest.

Are we allowed to use drones?

Yes! Your photographer or videographer must have a licence to fly the drone and supply us with proof of their licence and insurance prior to the wedding.

Are fireworks allowed?

Out of consideration for our neighbours and surrounding wildlife, we do not allow fireworks.

CATERING

Can our menu be tailor made?

Yes, we will work with you to provide the perfect menu for your wedding day.

Is it possible to choose a couple of dishes?

We recommend that you choose one starter, one main course and one dessert. Please take a look in our catering brochure for choice menus and bespoke options.

Can you cater for our guests who are vegetarian, vegan or have food allergies?

Yes, allergen, vegan and vegetarian adapted menus are available to guests with dietary requirements at no extra charge.

Do you provide crockery?

Yes, white crockery, traditional silver cutlery, table linen and glassware are all included in the package. If you wish to upgrade your tableware, our wedding planning team also offers a hire brochure. Our brochure showcases an incredible range of crockery, cutlery, linen and glassware that can complement your wedding day.

I have a copy of an old menu/ catering brochure but would like a dish from the new menus, is that possible?

You are welcome to mix and match dishes from any of our brochures.

Can we bring our own caterers?

It is essential that we provide a consistently high standard

of catering at our venue and therefore only allow our in-house experienced chefs on your wedding day, who offer an exceptionally high level of service using quality locally-sourced ingredients.

This excludes catering the night before; you are welcome to book catering externally to provide this as long as they are self-contained and do not require use of our kitchens or other resources.

What table layout can we have?

There are a few different table plans that work well for your wedding breakfast, which our wedding planning team can advise you on. We do require you to fill out a table plan and to mark if anyone has any dietary requirements so the events team are able to locate them easily on the day.

When do I need to provide my pre-orders?

We require all pre-orders and your final table plan to be with us six weeks before your event. Our wedding planning team will give you a blank table plan to fill in.

Can I bring my own alcohol?

Yes, you can only bring your own wine, prosecco or champagne and there will be no reduction in cost of the package. If you would like more wine, prosecco or champagne on top of what we offer in the package, then you can bring this for a corkage charge of £9.50 per bottle. Alternatively, we have an extensive wine list at competitive prices. You can also

bring one 50ml alcoholic favour per person at no extra charge.

Do you take cash and card payments at your bar?

Our bars are card only, including Apple Pay and contactless. Cash is not accepted, please do advise your guests.

Should we provide our contractors with a meal?

We recommend that you provide any suppliers spending more than five hours at your wedding with a meal. Most suppliers will also outline their requirements for food and drink in their booking contract. Contact our planning team for details.

Can we make any changes to the package?

You can add on to the package but cannot remove any items. You can only increase the amount of guests; our price list outlines the minimum amount of guests you will pay for.

What is involved in the tasting event?

We believe that it is very important for you to sample the fantastic food from our menu before your big day. We hold a tasting event to give couples an understanding of service, food and presentation when catering at a large scale. Private one-on-one tastings are not offered as these do not accurately reflect the experience that you would enjoy at your wedding. If your wedding is booked with less than 9 months to go, we may not be able to offer you a tasting. However, our head chef is available to speak with, if needed.

What is on the menu for the tasting event?

This is chosen months in advance and it is our chef's choice from the standard menu and the upgrade menus. Please see more details of the event in our catering brochure.

What menu is available for children?

Children can either have a half portion of your main meal or eat from the children's menu.

What constitutes a child?

Anyone eating a smaller version of the meal or a children's dish.

Can I bring my own food to our wedding?

You're welcome to bring in wedding cakes, sweets, and favours on place settings. We do not allow you to bring any other food on site for your wedding.

If you are providing anything that is not covered by a supplier's insurance, you will be required to sign a waiver form. Please note we do not allow nuts on site.

MUSIC

Are there any restrictions on evening music?

In accordance with our entertainment licence, a sound limiter is installed inside the venue and is set at 92 decibels.

Is music permitted outside?

Yes, music (acoustic or from a speaker) is permitted until 5pm. The volume is controlled by staff.

Amplified music is not allowed outside.

Where is evening music permitted?

Evening music is only permitted inside in the evening reception space.

Are we allowed smoke, fog or dry ice machines?

Smoke, fog or dry ice machines are not permitted at the venue. Please inform your chosen band or DJ of this when confirming your booking.

ACCOMMODATION

Do you have to take all of the accommodation on-site at the venue?

All wedding accommodation must be taken as part of your booking. It's priced separately from the main wedding package, and full details are in our accommodation price list.

Is a damage deposit required on the accommodation?

Yes. A deposit of £995 is required, which is added to your quote and will be refunded within 14 days of the wedding providing there is no damage to the site.

What time is check-in and check-out?

The accommodation is available for your guests to check in from 3pm. Checkout is by 10am the following day. Please note extra charges may apply if you check out late.

Do you offer early check in or late check out?

Early check in and late check out are unavailable.

Can we stay in the accommodation the night before our wedding?

Yes, you can book the night before your wedding if the accommodation is available. If booked more than six months in advance, a supplement of £2,000 (peak & mid-peak season) or £1,000 (off-peak) applies, in addition to the accommodation cost. Alternatively, if you wait until six months or less before your wedding date, you can book the extra night at the standard rate if it's still available, with no supplement charged.

ACCESSIBILITY

Does this venue have wheelchair access?

We have a number of accessibility features in place to ensure the comfort and safety of all guests that visit the site, including those using a wheelchair.

As the ceremony room is a listed building, there is unfortunately no appropriate access for those with limited mobility. Please speak to our team about the options available in this case.





Why Choose Us

- A breathtaking 14th-century Gatehouse for indoor and outdoor ceremonies.
- Exclusive-use estate with everything in one place - where traditional charm meets a modern wedding twist.
- On-site accommodation for up to 18 guests, with optional bell tents for extra overnight space.
- Beautiful barn for dining and evening celebrations.
- Two separate bars in different areas of the Estate.
- Seasonal menus from UNV Kitchen with full tasting experience.
- A private Preparation Room to get ready on site with your wedding party.
- Peaceful countryside setting that's private, picturesque, and easy to reach.
- Option to extend your evening celebrations until 1am with our licensed late finish.
- UNV takes the stress out of planning - with exclusive use, a fully stocked bar, dedicated wedding planning team, on-the-day wedding serving staff, in-house catering, and a trusted supplier network.





PENTNEY ABBEY

PRICE GUIDE

At Pentney Abbey, our package prices vary throughout the year depending on your chosen date. Our comprehensive wedding package includes everything you might need on your wedding day, making organising your wedding day a much simpler task. To book your wedding date, call 01553 348003.

WEDDING PACKAGE INCLUDES

Our wedding package includes:

Exclusive use of Pentney Abbey Estate

Welcome drink and three canapés per person

Executive chef designed three-course wedding breakfast

Half a bottle of wine per person with the wedding breakfast

Toast drink of chilled Prosecco

Evening light bites

Cake stand and knife

Wedding coordinator

All staffing

Private bar facilities

White linen tablecloths and napkins

White china crockery, cutlery and glassware

Preparation area from 10 am on the wedding day

A bottle of Champagne in the Honeymoon Suite

A complimentary mid-week visit to the CMA inspiration room (please contact our planning team to get booked in)

All Inclusive of VAT

Additional extras:

Inside ceremony £120

Outside ceremony £180

*Bank Holiday Mondays or Fridays are charged at peak Saturday prices. Easter Sunday is charged as a Bank Holiday.

*Christmas Eve, Boxing Day, New Year's Eve and New Year's Day – price on application.

Additional day guests £95 per person. Children £30 per child. Additional evening guests £20 per person.

If you have fewer guests, the standard package price applies.

If you are taking the accommodation the night before your wedding, you are eligible for an earlier ceremony of 1 pm subject to a fee of £250. Please note this is not available for those with one night packages only.

PENTNEY ABBEY | ABBEY ROAD | PENTNEY | NORFOLK | PE32 1JT
01553 348003 | pentneyabbey@uniquenorfolkvenues.co.uk | pentneyabbey.co.uk

Updated 7th July 2025

PRICE CHART

SEASON	DAY/GUESTS	2025	2026	2027	2028
Peak (May - September)	Monday - Thursday (60 day, 100 evening)	£11,610	£11,995	£12,600	£12,975
	Friday (60 day, 100 evening)	£12,960	£13,250	£13,900	£14,300
	Saturday (60 day, 100 evening)	£15,110	£15,495	£16,270	£16,750
	Sunday (60 day, 100 evening)	£12,685	£13,250	£13,900	£14,300
Mid Peak (April and October)	Monday - Thursday (60 day, 100 evening)	£10,465	£10,995	£11,550	£11,895
	Friday (60 day, 100 evening)	£11,885	£12,250	£12,860	£13,245
	Saturday (60 day, 100 evening)	£13,665	£13,995	£14,695	£15,150
	Sunday (60 day, 100 evening)	£11,360	£12,250	£12,860	£13,245
Off Peak (November - March)	Monday - Thursday (60 day, 100 evening)	£9,750	£10,250	£10,765	£11,100
	Friday (60 day, 100 evening)	£10,250	£10,750	£11,285	£11,625
	Saturday (60 day, 100 evening)	£11,750	£12,250	£12,865	£13,250
	Sunday (60 day, 100 evening)	£9,995	£10,750	£11,285	£11,625

ACCOMMODATION PACKAGE

The accommodation at Pentney Abbey consists of nine bedrooms (sleep 18).

SEASON	DAY	2025	2026	2027	2028
Peak / Mid Peak / Off Peak	Monday - Thursday	£1,800	£2,000	£2,100	£2,200
	Friday	£1,800	£2,000	£2,100	£2,200
	Saturday	£1,800	£2,000	£2,100	£2,200
	Sunday	£1,800	£2,000	£2,100	£2,200

*All accommodation has to be taken with the hire of Pentney Abbey

For additional nights there is a supplement charge of £2000 (peak season and mid peak) or £1000 (off peak), in addition to the cost of the accommodation if you book the extra night more than six months in advance of your wedding date. Alternatively you can wait and contact your wedding coordinator six months or less before your wedding; if the accommodation is available, you can book without paying the £2000 / £1000 supplement (just pay the charge of the accommodation).

The accommodation package includes:

The Farm House – five bedrooms and four bathrooms

Fig Tree Cottage – two bedrooms and two bathrooms

Walnut Cottage – two bedrooms and one bathroom

All accommodation is self-catering

We make sure our pricing structure and wedding package is as clear and straightforward as possible, so that you are fully aware of everything that you will receive on your wedding day. Our friendly team will gladly help with any queries or financial matters that you wish to discuss, so don't hesitate to get in touch.

Next Steps

How do we book and secure our date?

You can hold your chosen date for 5 days. Thereafter, our wedding planning team will be in touch. Next, an initial £500 payment is required to hold your date.

Once this has been completed, you will receive an email from our wedding planning team. You will then need to sign your agreement to secure your date.

How is the full payment broken down?

The full payment is broken down into the following steps:

- ✓ £500 initial payment.
- ✓ £1,250 payment within 6 weeks of booking.
- ✓ £1,000 payment 12 months prior to your wedding date.
- ✓ £1,500 payment 6 months prior to your wedding date.

Remaining balance is due one month prior to wedding date.

Please note this payment schedule will be amended accordingly if booking with less than 12 months until the wedding date.

Is VAT included?

Yes, VAT is included in the prices of our packages, menus and extras.

Other Questions?

If you have any other questions, then please contact us via email; pentneyabbeyestate@uniquenorfolkvenues.co.uk



Next Steps

UNIQUE NORFOLK VENUES

PENTNEY ABBEY

Summer Offer!

£500 off + 3 free bell tents for 1 night on
Peak Friday, Saturday and Sunday

Offer Available July-August 2025. Contact 01553 348003
or email office@uniquenorfolkvenues.co.uk

UNIQUE NORFOLK VENUES

PENTNEY ABBEY

Discover our golden hour viewing

See our venue in a different light, Tuesday 2nd September 5pm - 7pm

Join us for our exclusive Golden Hour Viewing — see the venue fully set up, beautifully lit by the evening sun, and enjoy a private tour with our team. It's the perfect way to experience the space at its very best. Contact 01553 348003 or email office@uniquenorfolkvenues.co.uk

WE ARE WEDDINGS

Instagram @pentneyabbeyweddings | Facebook pentneyabbey | pentneyabbeyestate@uniquenorfolkvenues.co.uk
Instagram @uniquenorfolkvenues | Facebook uniquenorfolkvenues | uniquenorfolkvenues.co.uk

Updated 7th July 2025